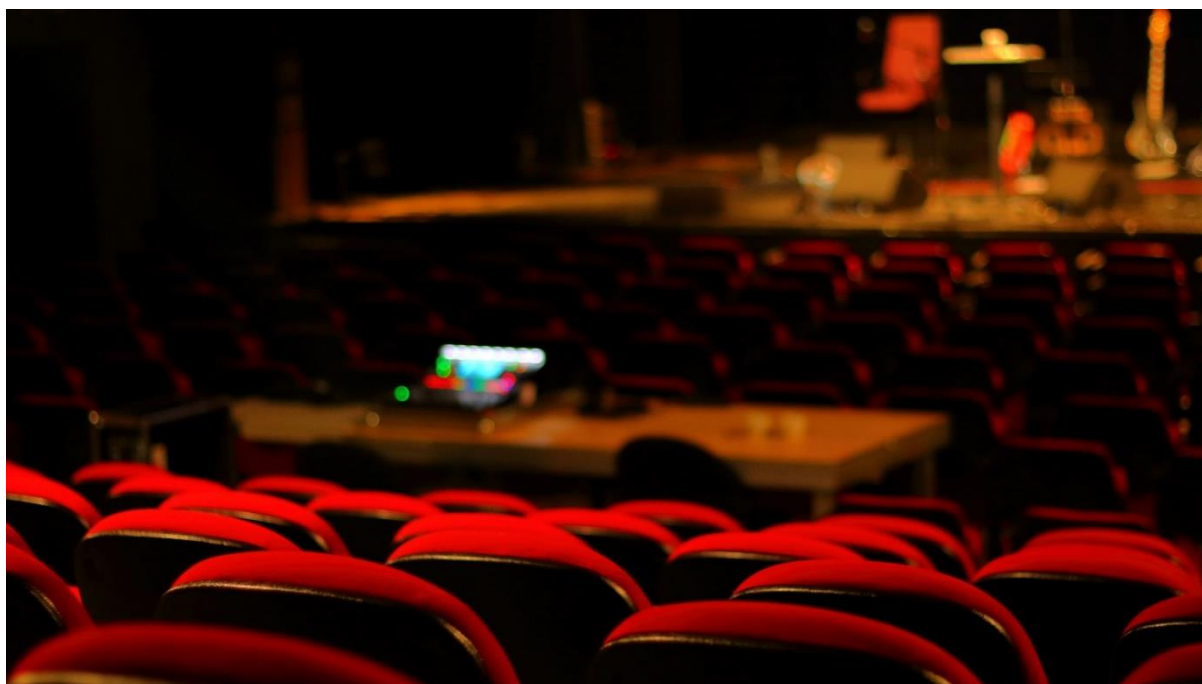


TECHNICAL DATA THEATERZAAL CC HET SPOOR

EILANDSTRAAT 6 – 8530 HARELBEKE



1. CONTACT

Address:

Cultural Centre CC het SPOOR

Eilandstraat 6, 8530 Harelbeke

Phone +32 56 733 420

onthaal@cchetspoor.be

www.cchetspoor.be

Director/Promotor theatre

Promotor music/comedy

Frederik Bossuyt

Phone +32 486 34 36 31

Frederik.bossuyt@harelbeke.be

Joachim Decoutere

Phone +32 479 94 09 23

Joachim.decoutere@harelbeke.be

Technicians:

Hans Valcke

Phone +32 478 56 74 53

Hans.valcke@harelbeke.be

Sander Houtekier

Phone +32 495 59 77 97

sander.houtekier@harelbeke.be

Mattias Sercu

Phone +32 0498 81 42 94

mattias.sercu@harelbeke.be

Thijs Desodt

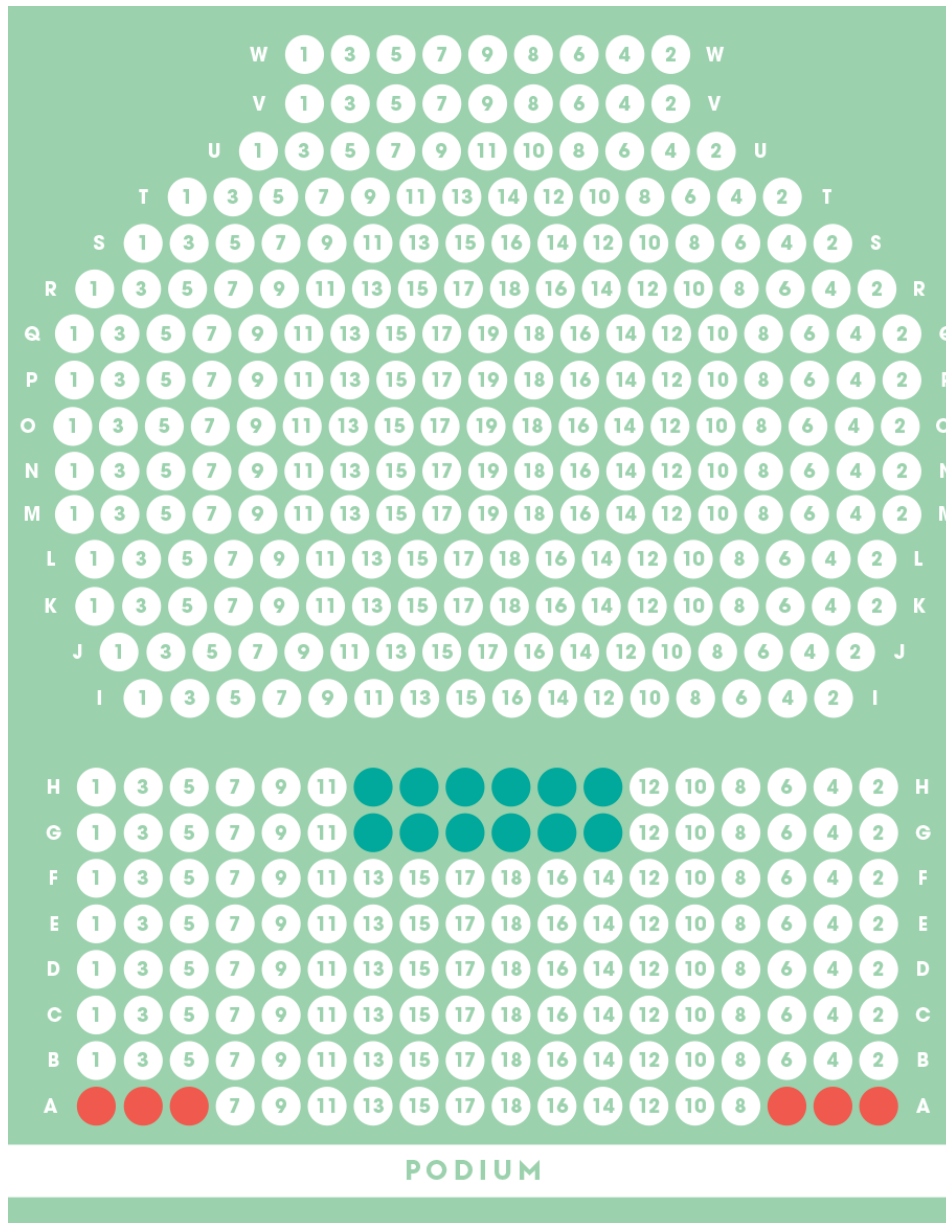
Phone +32 498 56 75 78

thijs.desodt@harelbeke.be

2. STAGE DESIGN

2.1 Theatre hall in general

- Dimensions of the theatre: parterre (ground floor) 8.5m deep/15.75m wide
- **126 seats (or 138 seats when technical booth is not installed)**
- Grandstand: 15.5m depth/15.75m wide **with 241 seats**
- Max. seats in the theatre hall: **379**
- Stage opening size: 5.15 m high/ 12 m wide
- There is no stage tower or fire curtain
- Theatre hall is completely darkened



2.2 Stage Floor

- Dimensions of playing surface/stage with legs and black backdrop (curtain on rails): 12m wide/ 10m deep.
- Dimensions of the stage without legs and backdrop: 18.5m wide/12m deep.
- Stage height (ground floor -> stage): 76cm.
- Stage floor is concrete plywood (18mm thick) and has no slope.
- There is no nailing or screwing allowed in the stage! Of course, painting work is also not allowed on stage. Sets must always enter the theatre finished.

2.3 Rigging / fly system (details on the 'trekkenplan')

- 1 hall bridge (Alu trio 290) 12m long, max height 6m with 12 separate dimmer points + DMX 3PIN.
- 1 portal bridge (Alu trio 290) 12m long max. height 5.50m with 12 separate dimmer points + DMX 3PIN.
- 5 fixed pulls/bars, Ø48mm, 12m long, max height 5.50m with 12 separate dimmer points.
- 5 moving bars, Ø48mm, 11m long, max height 5.50m with 10 CEE dimmer points of which 5 separate dimmer-lines(symmetrally duplicated) + transition CEE to schuko present + DMX 3PIN.
 - WLL evenly distributed weight 250 Kg.
 - WLL point load 100 kg.
- 1 moving back truss (Alu trio 290) 12m long, max. Height 5.50m without fixed dimmer points.
 - WLL evenly distributed weight 500 Kg.
 - WLL point load 240 kg.

2.4 Curtains/legs/borders (see drawing plan)

- 12 legs (velvet delta black) attached to suspension system with rotodrapier with which a black-box can easily be made.
 - Dimensions: 5.5m high by 1.5m wide.
- 6 top-borders (velvet delta black) attached to suspension system (can't be moved)
 - Dimensions: 1.25m high by 12m wide.
- Black backdrop draped in 4 parts on rail system.
 - Dimensions: 5.5m high by 3m wide.
- Front curtain draped in 2 parts (velvet delta black) Greek opening (can be opened with winch system)
- White Horizon backdrop (needs to be installed separately, can't be moved)
 - Dimensions: 5.5m high by 12m wide.

2.5 Artist rooms / dressing rooms

The 4 separate Boxes (Loges) are located on the COUR side (stage left) and are each equipped with toilets and showers.

- Loge 1 : 20 people
- Loge 2: individual box
- Loge 3: individual box
- Loge 4: 6 persons

3. ELECTRICITY AND DIMMERS

3.1 Electrical power supply stage

- Power current connection are located JARDIN (stage right)
 - 1* 3 x 400V + N PE CEE 125A
 - 2* 3 x 400V+N PE CEE 63A
 - 2* 3 x 400V + N PE CEE 32A 1 for sound!
 - 7* 3 x 400V + N PE CEE 32A **fused at 20A!**
- Power current connection old JARDIN technical control cabin at the top of the grandstand
 - 1*3 x 400V + N PE CEE 32A
- Sufficient fixed voltage cour en jardin 220v (Belgian outlets)

3.2 Dimmers

A total of 72 dimmers (ETC ColorSource ThruPower 24x10A) are available via hardpatch box with sufficient powercon TRUE1 cables.

All dimmers have 3 modes: relay, dim, fixed voltage.

4 LIGHT

4.1 Light controllers

- Chamsys MQ80 + extra wing compact
- Chauvet Artnet NODE NET-X II + Ethernet cat7A
- ADB Domino 48

4.2 Theatre spots

- | | | |
|------------------------------------|----------------------------|-----------------------|
| ▪ 18* PC ADB C101 | 1Kw + barndoors | 10° - 65° |
| ▪ 10* PC Coemar Passo | 1Kw + barndoors | |
| ▪ 4* profile spotlights ADB DW 105 | 1kw + iris and gobo holder | 15°-38° |
| ▪ 5* profile spots ADB DS 105 | 1kw + iris and gobo holder | 15°-31° |
| ▪ 2* profile spotlights ADB DS 101 | 1kw + iris and gobo holder | 15°-31° |
| ▪ 8* ACP ADB 1001 | 1Kw + gel-frame | |
| ▪ 4* ACP CCT | 1Kw + gel-frame | |
| ▪ 34* PAR64 | 1Kw + gel-frame | choice of CP 60,61,62 |

4.3 LED fixtures

- | | | |
|-------------------------------------|------------------|------------|
| ▪ 12* Robe ledbeam 150 | 7 x 40W RGBW | 3.8° - 60° |
| ▪ 9* Robe T11 profile with PC lens | CMY/RGB of RGBAL | 5° - 50° |
| ▪ 15* Showtec spectral M800 Q4 TOUR | 14 x RGBW | 10°-19° |
| ▪ 5* Showtec pixelbar 18 Q4 TOUR | 18 x 8W RGBW | 40° |

4.4 Hazer

- Antari HZ 500 hazer

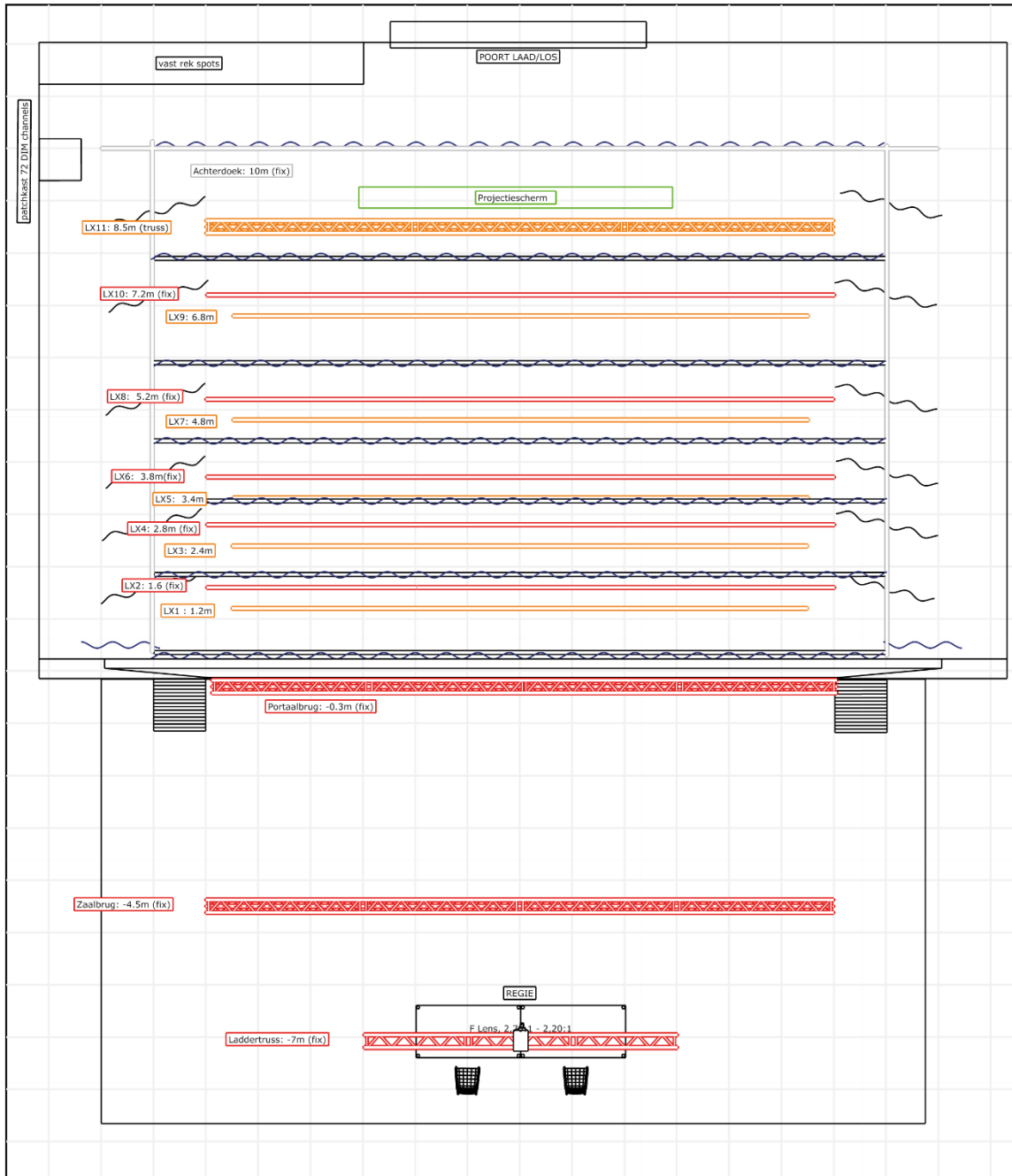
4.5 Color filters /gels

- Extensive colour filter LEE range

4.6 Tripods and light-towers

- 4 black ballet towers W: 58cm; H: 65cm-125cm-185cm
- 2 black ballet towers W: 58cm; H: 65cm-125cm

5 DRAFT PLAN



	Zaal	Theaterzaal CC het SPOOR
	Locatie	Eilandstraat 6 Harelbeke V1: 01/07/2022

6 SOUND

6.1 Speakers

Fully room-wide system that is stacked on stage, adjusted by certified system technician. The front system consists of:

- Left
 - 1 x L-acoustics arcs FOCUS
 - 1 x L-acoustics arcs WIDE
 - 1 x L-acoustics SB 18M
- Frontfill
 - 2 x L-acoustics 8XT
- Right
 - 1 x L-acoustics arcs FOCUS
 - 1 x L-acoustics arcs WIDE
 - 1 x L-acoustics SB 18M
- Amplifiers
 - 2 x L-acoustics LA4x

6.2 Monitors

- 6 x L-acoustics X12 + 2 x rigging brackets with 2 x L-acoustics LA4x

6.3 Mixing tables

- 1 x Allen&Heath SQ7 + 2 SLINK ports(digital) + cat7A + 2x audiorack DX168
- 1 x Allen&Heath QU24 (digital) + cat7A + 1 x audiorack AR2412

6.4 Tripods + Microphones

- Micro tripods
 - 20 large tripods
 - 11 small tripods
 - 1 bass drum stand
 - 1 tripod with round base
- Speaker stands
 - 4 Gravity tripods
 - 2 K&M tripods
- Mircophones
 - 1* Shure Beta 52a 6* DI AUDIO DAP
 - 3* Shure sm58
 - 3* Shure beta sm58a
 - 4* Shure sm57
 - 1* Sennheiser e906
 - 3* Sennheiser e604
 - 2* AKG C430

- Wireless Microphones
 - 1* ULXD4QE receiver
 - 2* ULXD1 bodypack + TH53T omnidirectional (color: cacao)
 - 1* ULXD2 handheld smB58a
 - 1* ULXD2 handheld sm58

7. VIDEO

7.1 Projector

- 1* Barco projector PHWU-81B (Fixed in the theatre hall, see plan)7500 ANSI lumens.
 - H-Lens type 1.68-2.37 : 1
 - H-Lens type 2.2-2.7 : 1 standard lens for fixed projection screen.

Service is done in Regie JARDIN at the top of the grandstand. There are HDMI/VGA connections on the JARDIN STAGE, HDMI in the middle of the hall at the stage, HDMI/VGA Regie JARDIN at the top of the stands.

7.2 Screen

- Fixed projection screen
 - Fixed in the middle of the stage, 9m from the edge of the stage.
 - 6m wide by 3.75m high.
 - Only electrically operated from the JARDIN at the top of the grandstand.

9 PIANO

There is a piano Yamaha s6x present on stage.

9. LOADING AND UNLOADING

The theatre hall is located on a level difference of 1.60m compared to the car park. Loading and unloading is done from the car park on the ground floor via a freight elevator (maximum 2000kg – W:2.4m L:1.9m H:1.6). Through the roll-up gate(4.90m wide by 3.20m high) you come directly on stage-level.

10. AERIAL PLATFORM SKYJACK SJ16E

There are 2 aerial work platforms present, 1 in the hall and 1 on stage with a working height of up to 6.58m.